



BZ-2RW822-A2



Actual product appearance may vary.

BZ Series Standard Basic Switch, Single Pole Double Throw Circuitry, 15 A at 125 Vac, Roller Lever Actuator, 1,67 N [6 oz] Maximum Operating Force, Silver Contacts, Screw Termination, CE, CSA, DEMKO, UL

Features

- Accepted world-wide standard "Large Basic" switch
- Low operating force and differential travel
- Long mechanical life up to 20,000,000 cycles at 95% survival
- Elongated mounting hole for easier, more accurate mounting
- Current rating ranges from 15 A to 25 A
- Choice of actuation, termination and operating characteristics

Potential Applications

- Irrigation systems
- Semi-trailer trucks
- Timing devices
- Office equipment
- Test instruments
- Medical/dental equipment
- HVAC equipment
- Manually operated devices
- Valves

Description

MICRO SWITCH™ BZ/BA Series standard basic switches are used for simple or precision on/off application needs.

Product Specifications

Switch Type	MICRO SWITCH™ Standard 25,4 mm H x 17,8 mm W x 50,8 mm L [1.0 in H x 0.7 in W x 2.0 in L]
Sealed	No
Ampere Rating	15 A
Circuitry	Single Pole Double Throw (SPDT)
Actuator	Roller Lever
Termination	Screw
Operating Temperature Range	-55 °C to 85 °C [-67 °F to 185 °F]
Voltage	125 Vac

Approvals	CE,CSA,UL
Actuator Length	26,06 mm [1.026 in]
Contact Type	Silver
Operating Force (O.F.)	1,67 N [6.0 oz] max.
Release Force (R.F.)	0,42 N [1.5 oz] min.
Overtravel (O.T.)	2,39 mm [0.094 in] min.
Differential Travel (D.T.)	0,08 mm - 0,51 mm [0.003 in - 0.020 in]
Operating Position (O.P.)	30,17 mm \pm 0,38 mm [1.188 in \pm 0.015 in]
Free Position (F.P.)	32,54 mm [1.281 in] max.
Material	Plastic
Housing Material	General Purpose Phenolic
High Temperature	204 °C [400 °F]
CE mark	61058-1
UL File #	E12252
CSA File #	LR41370
Agency Approvals and Standards	1054
Mounting Screw Size	3,53 mm [0.139 in]
Mounting Centers	25,4 mm [1 in]
Maximum Tightening Torque	0,33 N m [3.0 in lb]
Weight	34,5 g [0.076 lb]
Package Height	24,1 mm [0.95 in]
Package Width	17,5 mm [0.69 in]
Package Length	49,3 mm [1.94 in]
Recommended For	26,7 mm [1.05 in] (steel roller) lever applications
Availability	Global
UNSPSC Code	30211905
UNSPSC Commodity	30211905 Snap switches
Series Name	BZ/BA/WA/YZ

MICRO SWITCH

A DIVISION OF MINNEAPOLIS-HONEYWELL REGULATOR COMPANY
 MINNEAPOLIS, MINN. 55412
 FED. MFR. CODE 91929

SWITCH - BASIC

CATALOG LISTING
BZ-2RW822-A2

APF1500

M BZ-2RW822-A2
 PAGE 1 OF 1

DRAWING NUMBER

14

ISSUE

REPLACES

RELEASE NO.

CHECK

RJ

CHECK

17, APR 82

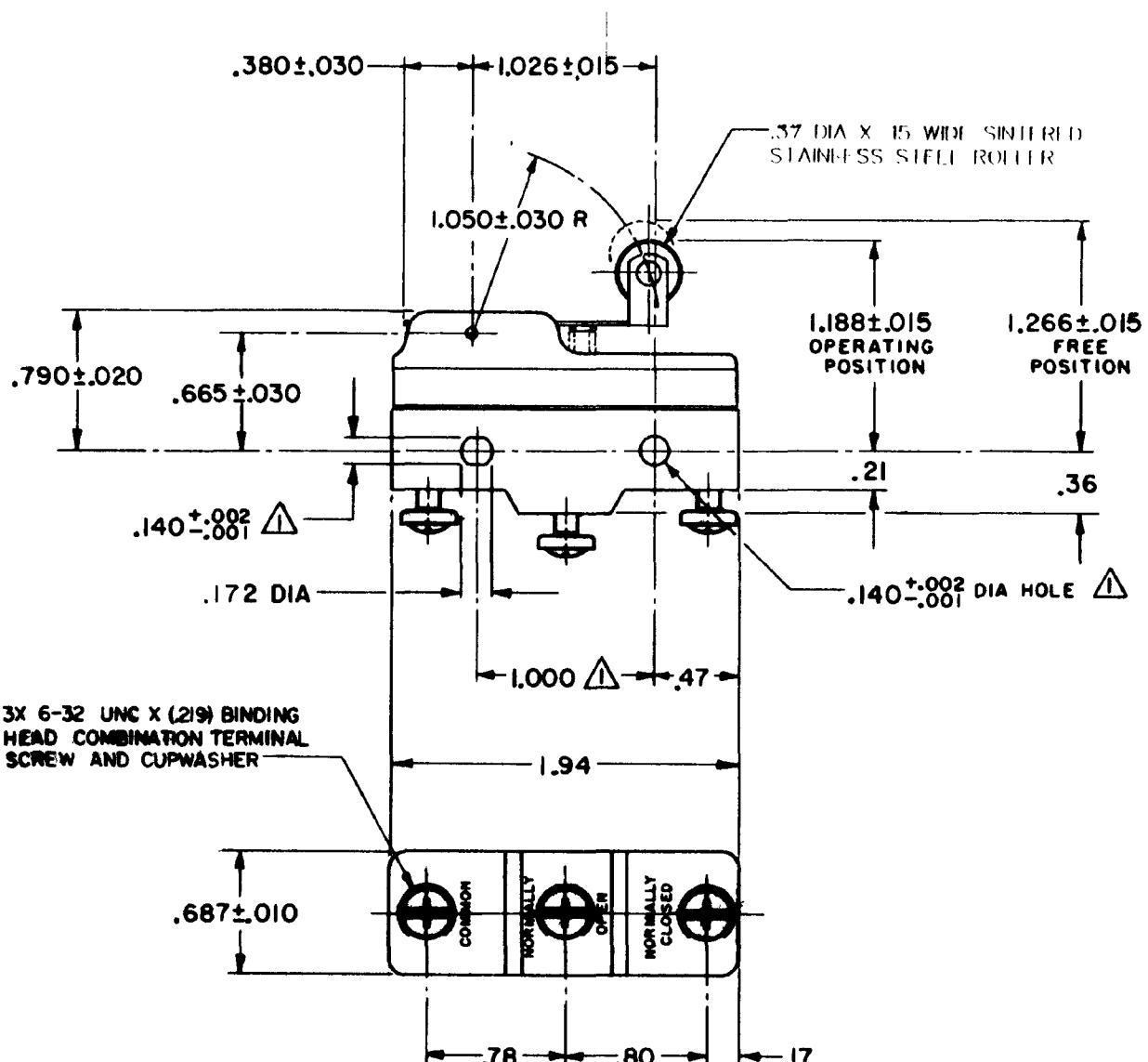
17, APR 82

17, APR 82

CHECK

5 APRIL 82

5 APRIL 82



NOTE -
 ⚠ MOUNTING HOLES WILL ACCEPT PINS OR SCREWS OF .139 MAX DIA ON 1.000 ± .002 CENTERS

THIS DRAWING COVERS A PROPRIETARY ITEM AND IS THE PROPERTY OF MICRO SWITCH, A DIVISION OF MINNEAPOLIS-HONEYWELL REGULATOR CO. THIS DRAWING IS NOT TO BE COPIED OR USED WITHOUT THE APPROVAL OF MICRO SWITCH.

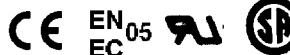
CHARACTERISTICS

OPERATING FORCE ----- 6 OZ MAX
 RELEASE FORCE ----- 1 1/2 OZ MIN
 DIFFERENTIAL TRAVEL ----- .003 - .020
 OVERTRAVEL ----- .094 MIN

ELECTRICAL DATA

CONTACT ARRANGEMENT
 S P D T
 - L74 - 16A - 125, 250, OR 400 VAC, 2A-600 VAC
 1/2 A - 125 VDC; 1/4 A - 250 VDC
 1/8 HP - 125 VAC; 1/4 HP - 250 VAC

-L288-
 -L306-
 -L315-



16A 250V ~ T85 5E4

SCALE FULL

DO NOT SCALE PRINT

UNLESS OTHERWISE SPECIFIED DIMENSIONS ARE IN INCHES
TOLERANCES ARE:
 ONE PLACE (.0) ± .030
 TWO PLACE (.00) ± .018
 THREE PLACE (.000) ± .008
 ANGLES ±

WEIGHT .076 LB

FORMTEK

FO-90378

DRAWN

5 APRIL 82

5 APRIL 82